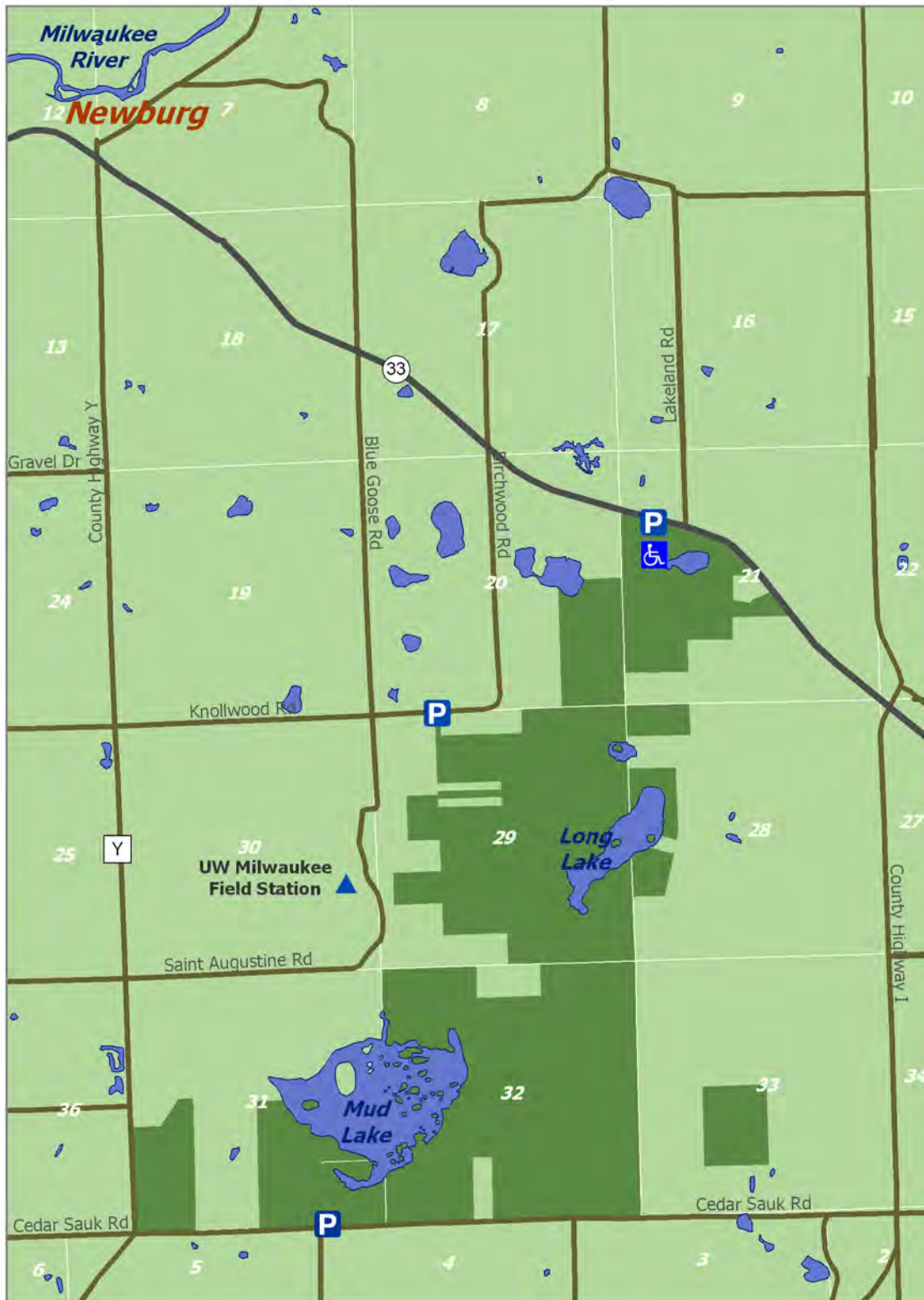
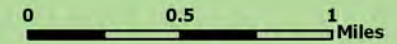


Public Lands at Cedarburg Bog

Legend

Parking	P	 Public Lands
UW-Milwaukee Field Station		 Waterways
Barrier Free Pier		 State Highway
		 Local Roads
		 Sections



Public lands at Cedarburg Bog State Natural Area are open year-round for hunting and other recreational use. No camping or motorized vehicles are allowed. Access to private property requires landowner permission.

Parking at the north end is at a lot on the south side of STH 33. A handicapped accessible trail leads to a barrier-free pier on Watts Lake. Another short trail leads to the edge of a wooded swamp, beyond which there are no trails and further access is difficult.

Parking along Knollwood Road is on the south side of the road.

Parking at the south end is a pull-off on the north side of Cedar-Sauk Road. An unimproved boggy trail leads to Mud Lake which is suitable for canoe or kayak. The interior of the Bog is not easily accessible from Mud Lake.

For further information contact the DNR Property Manager at (262) 285-3015. Access to UW-Milwaukee land is available to groups by contacting the UW-Milwaukee Field Station on Blue Goose Road, (262) 675-6844.